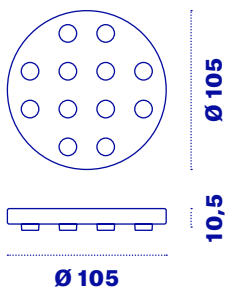
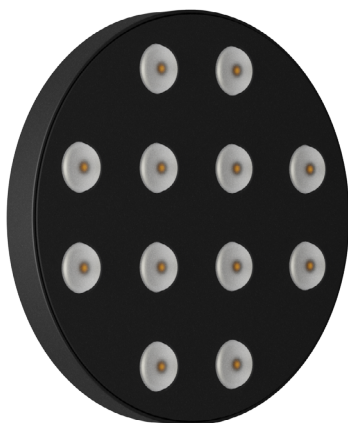


Shaula C100

Shaula C100 is a circular lamp composed of twelve LEDs with very high efficiency and color rendering. The lenses used create direct lighting that makes the lamp particularly suitable for ceiling installations. The lamp can be installed using the Contatto fixing and power supply kit, or, in the wireless version, using the K-Wireless panel.

-  **Magnetic fixing**
-  **Light**
-  **InDoor**



Shaula C100

Supply voltage	12 VDC
Max. current	2 A
Technology	LED
Temperature	<input checked="" type="radio"/> 3000K <input type="radio"/> 4000K
Optic	DIRECT
CRI	90
Use	INDOOR

Contatto version (page 60)	<input checked="" type="radio"/> 3000K	<input type="radio"/> 4000K
Power	7 W	7 W
Lumen	1000	1060

Wireless version (from page 61)	<input checked="" type="radio"/> 3000K	<input type="radio"/> 4000K
Power	3,3 W	3,3 W
Lumen	490	520

Code	Color	Temperature	Installation
SHA-C	White = B	3000°K = 3K	Contatto = C
	Black = N	4000°K = 4K	Wireless = W