

# Buso 80

Buso 80 is a revolutionary recessed spotlight that combines very high lighting performance and extreme ease of assembly, thanks to a patented magnetic system. A hole previously made in the false ceiling with a 79 mm cup saw allows you to insert the two supplied metal flanges, on which an aluminum cone will be magnetically fixed which contains a COB source with optics of your choice. A rubber gasket and a spotlight height adjustment system ensure that the spotlight remains perfectly flush with the plasterboard.



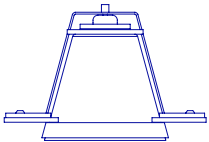
Magnetic fixing



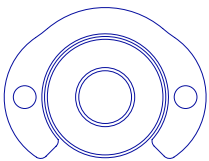
Light



InDoor



90



105

133

## Buso 80

<b>Supply voltage</b>	<b>36 VDC</b>
<b>Max. current</b>	<b>0,3 A</b>
<b>Technology</b>	<b>LED</b>
<b>CRI</b>	<b>90</b>
<b>Use</b>	<b>INDOOR</b>

	● 2700K				● 3000K			
<b>Power</b>	5,4	7,2	9	11	5,4	7,2	9	11
<b>Lumen</b>	540	720	900	1100	594	792	990	1200

Code	Color	Temperature	Optic
<b>BS8-</b>	White = <b>B</b>	2700°K = <b>2K</b> 3000°K = <b>3K</b>	19° = <b>19</b>
	Black = <b>N</b>		35° = <b>35</b>
	Bronze = <b>BZ</b>	52° = <b>52</b>	
	Copperbronze = <b>BR</b>		
	Aluminium = <b>AN</b>		